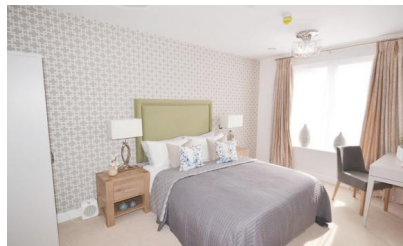


## Description

- ◆ Extra Care Facilities at Poundbury in Dorset, for Yarlington Housing Group working with the Duchy of Cornwall
- ◆ Brand new development consisting of 63, 1 and 2 bedroom apartments for rental and shared ownership, designed for those with a local connection to Dorset likely to be aged 55+ and have some level of care or support need
- ◆ All flats are fully accessible with lifts and wheelchair storage, open plan kitchen and living room, non-slip shower room with walk-in shower, under-floor heating and a Tunstall alarm system and video entry for safety and security
- ◆ Communal facilities include a lounge and dining room, IT suite and library, garden, Wi-Fi throughout and a guest suite for family and friends to stay overnight if required

## Involvement

- ◆ Warden call systems & assistive technology installations
- ◆ Provision of systems to accommodate people with additional needs including transportation systems, alarm systems assisted bathing, and audible and visual alarms
- ◆ Building information documentation to comply with Building Regulations L1A & L2A
- ◆ Metering to comply with Building Regulations L2A
- ◆ Carried out the detailed design for the project including all schedules and calculations to enable the client's technical advisor to review and approve the detailed design



## Benefits Delivered

- ◆ Worked with specialist alarm company to develop Warden Call system
- ◆ SBEM calculations and EPC certification to prove Part L Building Regulations compliance
- ◆ Collaborative approach resulting in an integrated MEP design with the building Architecture and Structure
- ◆ Provided guidance to the collaborative design team on options for delivering the building energy strategy for compliance with Building Regulations
- ◆ Early engagement of the M&E contractor allowed early generation of design queries, leading to smooth services installation on site
- ◆ Developed external lighting proposals to facilitate safe vehicular and pedestrian movement around the site



*Award winning extra care development in Dorset with 13 shared ownership apartments and 50 available for rent*