

Description

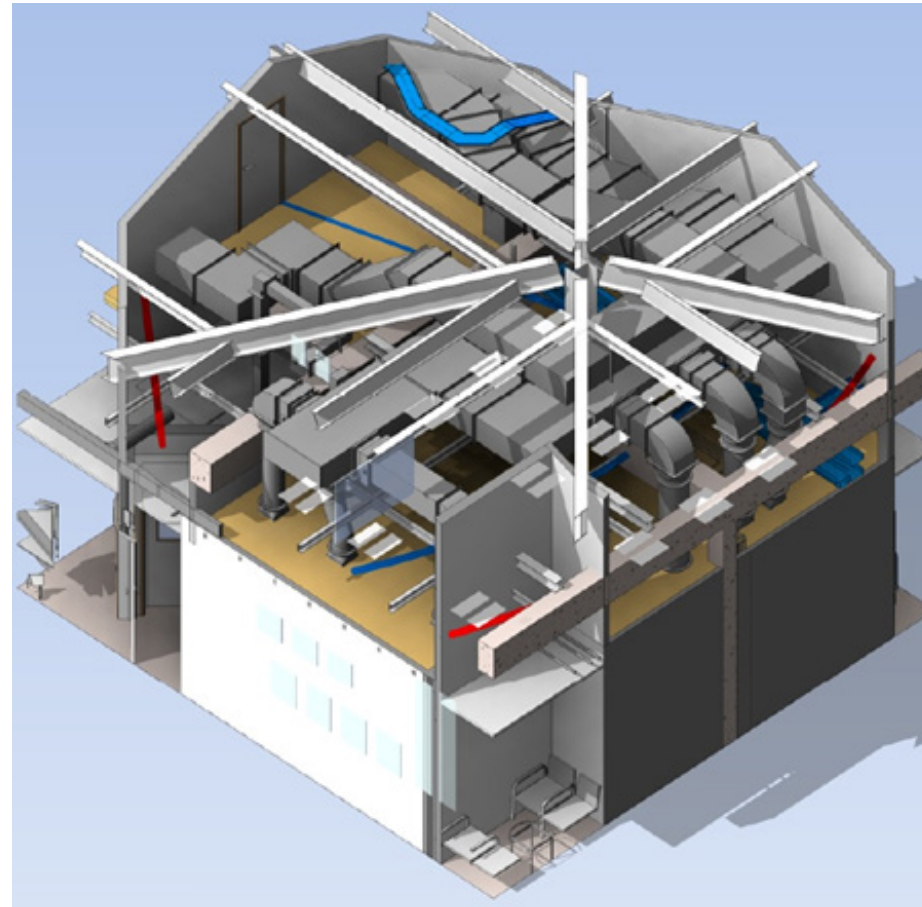
- ◆ £3m refurbishment of the existing cath lab for the Royal Devon and Exeter NHS Foundation Trust
- ◆ The original pacing room was constructed in 1993, but development of new procedures and change in technology required redevelopment of the building
- ◆ The facility accommodates new equipment for the catheterisation laboratory or cath lab, an examination room with diagnostic imaging equipment used to visualise the arteries of the heart and the chambers of the heart and treat any stenosis or abnormality found.

Involvement

- ◆ Detailed design of the mechanical and electrical services for the refurbished building
- ◆ Upgrading of the inadequate and outdated ventilation and air-conditioning control systems
- ◆ Review of the current building services to design replacement services efficiently and utilise existing routings
- ◆ Re-provision of medical gases and services.

Benefits Delivered

- ◆ Saved £½m from cost estimates by surveying the building and identifying an existing distribution system, thus obviating construction of a new route
- ◆ The work was carried out minimising the impact on the use of surrounding accommodation and facilities
- ◆ Design of efficient MEP systems and controls, offering high reliability and ease of maintenance
- ◆ Use of full BIM Revit federated model, developed in conjunction with the architect and structural engineer, and used by the contractor.



Refurbishment and modernisation of the existing Cath Lab at the Royal Devon and Exeter Hospital