

## Description

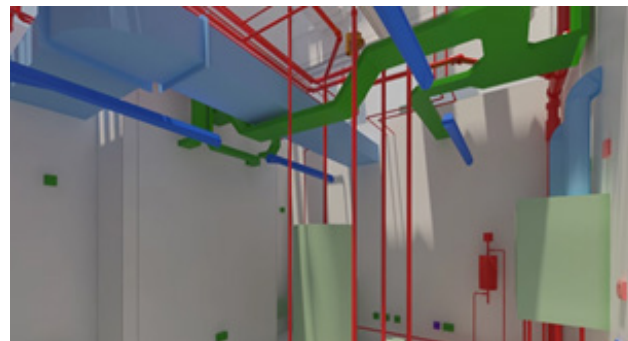
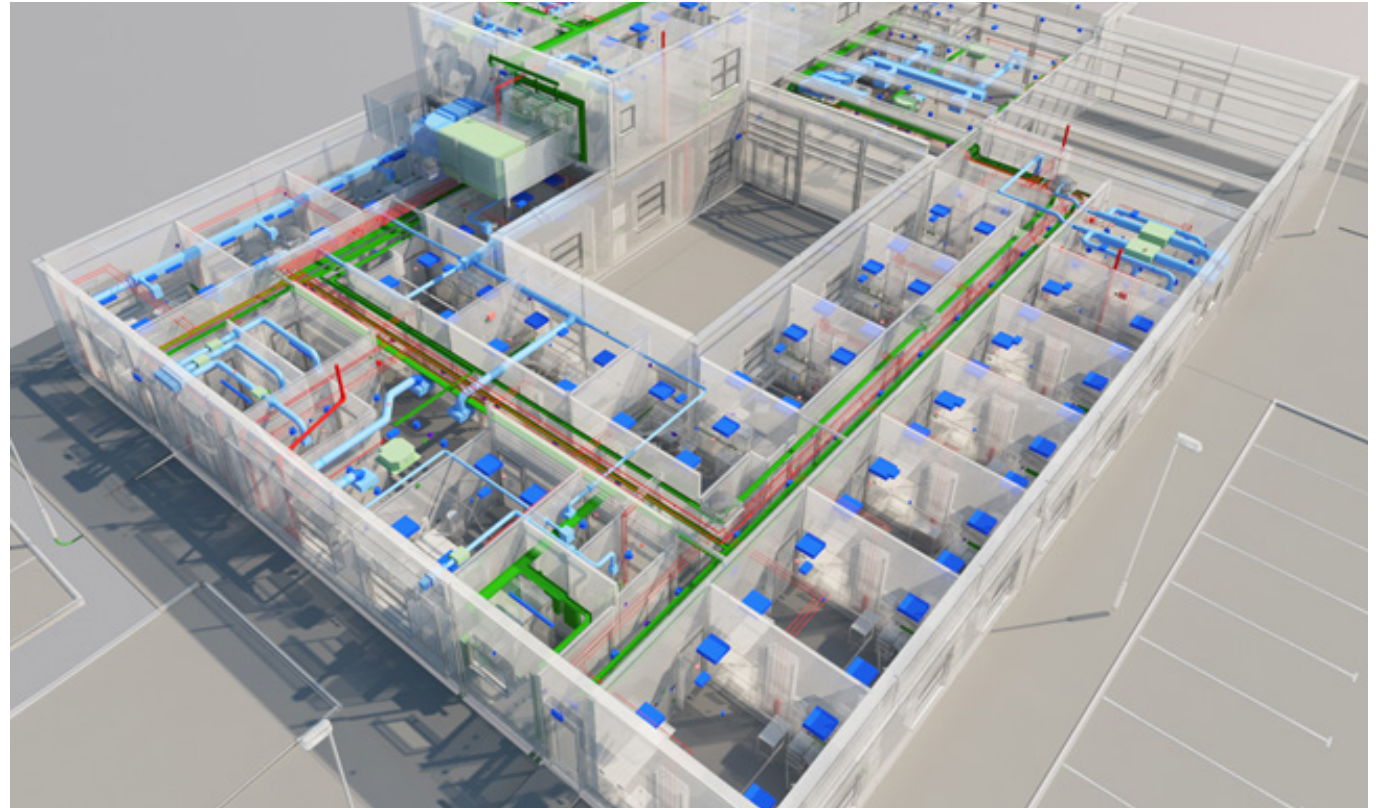
- ◆ 1,300m<sup>2</sup> health centre development for the Auckland Medical Group on the site of the old fire station in Bishop Auckland, County Durham
- ◆ Primary care centre and pharmacy to encompass advancing technology, and integration between primary and community services and include provision for GP special interests.
- ◆ Building comprising of reception, waiting area, consulting and meeting rooms, training rooms, offices, staff kitchen and associated WC and circulation space.

## Involvement

- ◆ Undertook the full and detailed design of the mechanical and electrical building services, including cable sizing, lighting calculations, heat losses/ gains, pipework and ventilation duct sizing and plant selection
- ◆ Full thermal modeling was undertaken to establish requirements for natural ventilation
- ◆ Load estimates completed for the Statutory Authority enquiries
- ◆ Full energy modelling.

## Benefits Delivered

- ◆ Autodesk Revit MEP fully co-ordinated Building Information Model to a level of development consistent with level 2
- ◆ Run full clash avoidance using Autodesk Navisworks
- ◆ Reduced plant space requirement through modelling to release GIFA for end-user use
- ◆ Fully rendered 3D walkthrough of the MEP services
- ◆ Design developed to achieve BREEAM Very Good certificate
- ◆ Redeveloped original proposals to ensure Part L compliance.



*The scheme provides a facility to support the medical needs of the local community*